

MP DIAGNOSTICS MOLECULAR DIAGNOSTICS PRODUCT FAMILY

COMPLEMENTARY NUCLEIC ACID PURIFICATION SYSTEM

TRUE WALK-AWAY AUTOMATION

- Bench-top automated system processing up to 12 specimens at a time for rapid purification of nucleic acid using magnetic bead separation technology
- Consistent highly purified DNA / RNA could be obtained within 35 - 100 mins
- Time and labour saving with pre-filled reagent cartridges and disposables
- Minimizes contamination risks with unidirectional robot movement and built-in UV lamp
- Fast error-free protocol set-up by quick barcode scan
- 14 extraction kits are available



MPPure-12 aNAP System
Catalogue no.: EMC017

ORDER INFORMATION

NO.	PRODUCT NAME	CATALOGUE NO.
01	MPure Blood DNA Extraction Kit 200	8AH40-048
02	MPure Blood DNA Extraction Kit 1200	8AH50-048
03	MPure Viral Nucleic Acid Extraction Kit	8AH60-048
04	MPure Tissue DNA Extraction Kit	8AH70-048
05	MPure Cultured Cell DNA Extraction Kit	8AH80-048
06	MPure Bacterial DNA Extraction Kit	8AH90-048
07	MPure HPV DNA Extraction Kit for Swab Sample	8AJ10-048
08	MPure TB DNA Extraction Kit	8AJ20-048
09	MPure FFPE DNA Extraction Kit	8AJ30-048
10	MPure Forensic DNA Extraction Kit	8AJ40-048
11	MPure Viral / Pathogen Nucleic Acid Extraction Kit A	8AJ50-048
12	MPure Viral / Pathogen Nucleic Acid Extraction Kit B	8AJ60-048
13	MPure Viral RNA Extraction Kit	8AJ70-048
14	MPure Viral Nucleic Acid Extraction Kit 800	8AK10-048
15	MPure-12 aNAP System	EMC017

MPLICON and MPure Extraction Kits are for Research Use Only in the United States

Order your MPLICON today! enquiry_ap@mpbio.com

MP Biomedicals Worldwide HQ	MP Biomedicals APAC HQ	MP Biomedicals EMEA HQ	Distributed by:
MP Biomedicals LLC 3 Hutton Center Drive Suite 100, Santa Ana California 92707, USA Tel: 1 440 337 1200 Fax: 1 440 337 1180 Toll Free Tel: 800 854 0530 Toll Free Fax: 800 334 6999 Email: custserv@mpbio.com	MP Biomedicals Asia Pacific Pte Ltd 2 Pioneer Place Singapore 627885 Tel : 65 6775 0008 Fax : 65 6774 6146 Email: enquiry_ap@mpbio.com	MP Biomedicals Germany GmbH Thüringer Straße 15 37269 Eschwege Germany Tel: 49 5651 921 204 Fax: 49 5651 921 181 Toll Free Tel: 0800 426 65 337 Toll Free Fax: 0800 629 67 337 Email: diagnostics@mpbio.com	

CPB0916-1

CE

MPdx
POCT • SCREENING • CONFIRMATORY



MPLICON REAL-TIME PCR KITS

MOLECULAR DX

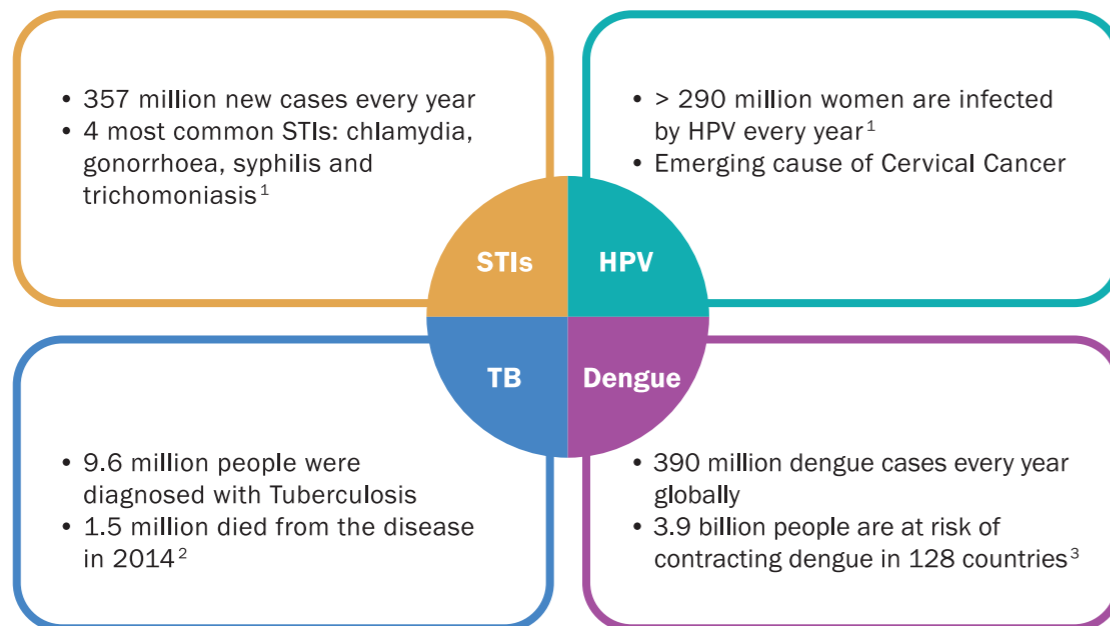
QUALITY YOU CAN TRUST

MP

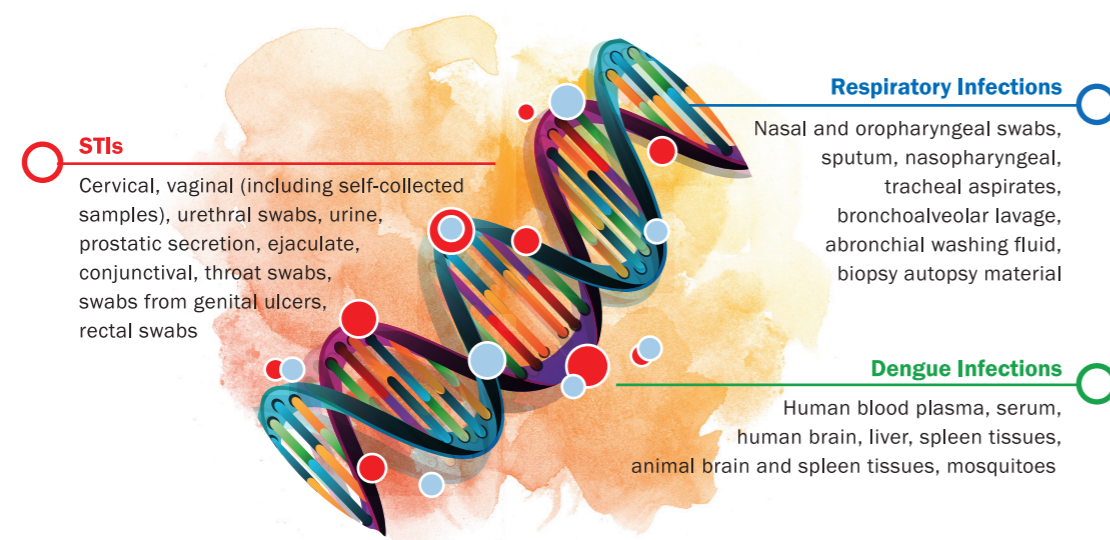
YOUR PARTNER IN MOLECULAR DIAGNOSTICS

Early and accurate diagnosis is crucial to provide appropriate therapy and to reduce the spread of infections. MPLICON Real-time PCR Kits provide accurate test results on STIs, respiratory and dengue infections. We understand that accuracy is important to you and your patients. This is why the entire MPLICON workflow, from sampling to detection, is monitored by controls so as to give quality results that you can rely on.

DISEASE BURDEN



WIDE RANGE OF SPECIMENS YOU CAN USE



References:
 1. World Health Organization, (2015) Sexually transmitted infections (STIs), Fact sheet N° 110, Updated December 2015. [Available on: <http://www.who.int/mediacentre/factsheets/fs110/en/>]
 2. World Health Organization, (2015) Tuberculosis, Fact sheet N° 104, Updated October 2015. [Available on: <http://www.who.int/mediacentre/factsheets/fs104/en/>]
 3. World Health Organization, (2015) Dengue and severe Dengue, Fact sheet N° 117, Updated May 2015. [Available on: <http://www.who.int/mediacentre/factsheets/fs117/en/>]

MPLICON DIAGNOSTICS TEST MENU

SEXUALLY TRANSMITTED INFECTIONS	CATALOGUE NO.
MPLICON <i>N. gonorrhoea</i> -SCREEN	8AF70-110
MPLICON <i>M. genitalium</i>	8AG50-110
MPLICON <i>M. hominis</i>	8AG10-110
MPLICON <i>T. vaginalis</i>	8AF90-110
MPLICON HSV-TYPE	8AG20-110
MPLICON HR HPV-TYPE	8AF40-108
MPLICON HR HPV-SCREEN + QUANT (2C)	8AG40-108
MPLICON HR HPV-SCREEN + QUANT (4C)	8AG30-108
RESPIRATORY INFECTION	
MPLICON <i>M. tuberculosis</i> Complex	8AF20-055
FLAVIVIRUS INFECTION	
MPLICON Dengue virus Type	8AK40-060
EXTRACTION	
DNA / RNA Extraction Kit	8AH20-100
DNA Extraction Kit	8AH30-100



Contact us for a quote today! enquiry_ap@mpbio.com